



# WATER SOFTENER SYSTEM 2MC "MAGNUM" SERIES TECHNICAL BULLETIN

Model Number	Cubic Ft. Resin Per Each Tank/Total	Grains Capacity Per Lbs. Salt				Service Flow GPM		Back Wash GPM	Lbs. Salt (Storage)	Lbs. Ship Weight (Approx)
		Economy		Maximum		Cont.	Peak			
		Per Resin Tank	Total/Day	Per Resin Tank	Total/Day					
2MC120	4.0/8.0	80/32	320/128	120/60	480/240	47	64	7.0	400	400
2MC150	5.0/10.0	100/40	400/160	150/75	600/300	67	85	12.0	500	575
2MC200	6.7/13.4	134/54	536/216	200/100	800/400	61	78	12.0	500	600
2MC240	8.0/16.0	160/64	640/248	240/120	960/480	74	97	15.0	800	860
2MC300	10.0/20.0	200/80	800/320	300/150	1200/600	68	91	15.0	800	910
2MC450	15.0/30.0	300/120	1200/480	450/225	1800/900	83	105	25.0	600	1325
2MC600	20.0/40.0	400/160	1600/640	600/300	2400/1200	89	120	35.0	1375	1900
2MC750	25.0/50.0	500/200	2000/800	750/375	3000/1500	88	118	35.0	1000	2050

### Protection:

The build-up of hard water scale significantly reduces efficiency and can damage critical components. The Trusco water softener is designed to maximize removal of harmful calcium and magnesium ions that precipitate from hard water. Properly selected and installed, a Trusco water softener will maintain your investment for the duration and ensure high efficiencies while minimizing costly repairs.

### Applications:

- Apartment buildings
- Commercial buildings
- Condominiums
- Factories
- Hospitals
- Laundries
- Motels/Hotels
- Nursing/Rest Homes
- Office buildings
- Restaurants
- Schools
- Car Washes
- Boiler pre-treat
- And more!

### Features:

- Continuous soft water with alternating twin tank design.
- Regeneration based on water use to minimize salt usage and cost associated with operation.
- Soft water regeneration for added performance.
- Non-corroding polyglass resin tank and high density polyethylene brine tank.
- Dual guard brine operators for prevention of brine tank overflow and accurate brine selection.
- Adjustable regeneration cycles for efficient water usage.
- High capacity, long life cation exchange resin.
- Pre-plumbed manifolds reduce field installation expense.



2 MC SOFTNER



2 MC SOFTENER IN USE

### Operating Specifications:

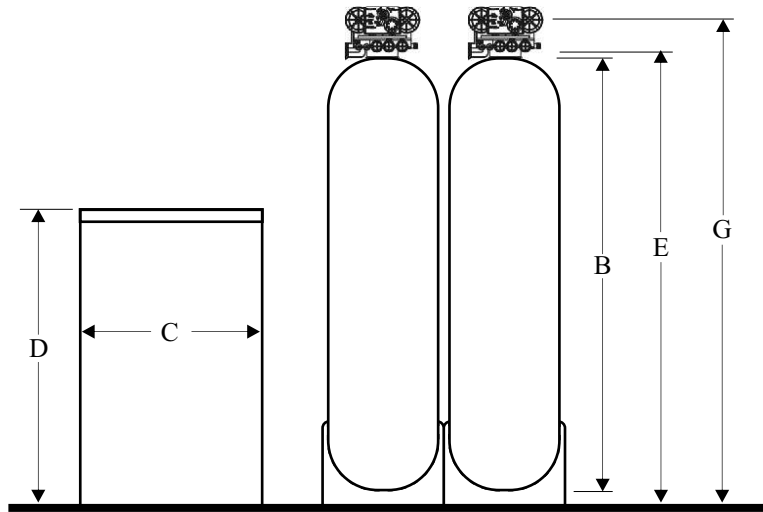
- Pressure; 25 PSI to 125PSI
- Temperature; 100°F Maximum
- Electrical; 24v, 110v, 220v-50Hz, 60Hz
- 5 Cycle regeneration (Backwash, brine draw, slow rinse, fast rinse, and service).

### Warranty:

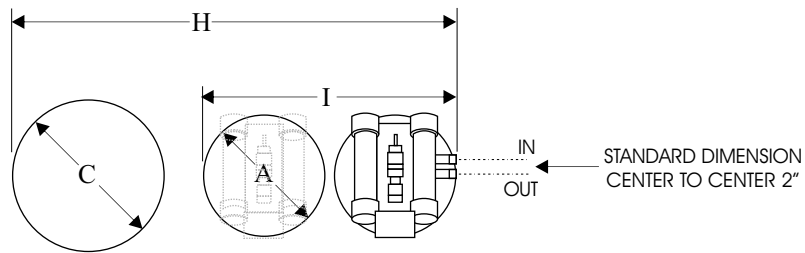
- 5 years against defect in commercial tanks.
- 5 years against defect in control valve.
- 1 year against defective material, workmanship on remaining supporting parts.

## 2MC "MAGNUM" SERIES WATER SOFTENER DIMENSIONS

	A	B	C	D	E	F	G	H	I	
Model Number	Resin Tank Diameter	Resin Tank Height	Brine Tank Diameter	Brine Tank Height	Inlet Outlet Height	Inlet Outlet NPT	Overall Height	Overall Length	Width of Resin Tanks Combined	
TWIN	2MC120	16"	65"	24"	50"	67"	2"	81"	70"	36"
	2MC150	22"	60"	24"	50"	67"	2"	77"	82"	48"
	2MC200	22"	60"	24"	50"	67"	2"	77"	82"	48"
	2MC240	24"	71"	30"	50"	77"	2"	88"	86"	52"
	2MC300	24"	71"	30"	50"	77"	2"	88"	86"	52"
	2MC450	30"	72"	39"	48"	80"	2"	95"	107"	64"
	2MC600	36"	72"	39"	48"	82"	2"	96"	162"	76"
	2MC750	36"	72"	39"	48"	82"	2"	96"	162"	76"



### 2MC "MAGNUM" SERIES SOFTENER



Distributed By: