



WATER SOFTENER SYSTEM 9F SERIES TECHNICAL BULLETIN

Model Number	Cubic Ft. Resin Per Each Tank/Total	Grains Capacity Per Lbs. Salt				Service Flow GPM		Back Wash GPM	Lbs. Salt (Storage)	Lbs. Ship Weight (Approx)
		Economy		Maximum		Cont.	Peak			
		Per Resin Tank	Total/Day	Per Resin Tank	Total/Day					
9F 8-44	.75/1.5	15/5	60/20	23/11	92/44	13	17	1.5	350	140
9F 9-48	1.0/2.0	20/7	80/28	30/15	120/60	14	19	2.0	400	200
9F 10-44	1.1/2.2	22/8	88/32	33/17	132/68	14	19	2.4	400	220
9F 10-54	1.5/3.0	30/10	120/40	45/23	180/92	14	19	2.4	400	245
9F 12-48	2.0/4.0	40/14	160/56	60/30	240/120	16	21	3.5	375	300
9F 13-54	2.5/5.0	50/17	200/68	75/38	300/152	16	21	4.0	350	400
9F 14-65	3.3/6.6	66/22	264/88	99/50	396/200	16	21	5.0	600	575
9F 16-65	4.3/8.6	86/29	344/116	129/65	516/260	17	22	7.0	600	720
9F 8-44T	.75/3.0	15/5	120/40	46/22	184/88	26	34	1.5	700	280
9F 9-48T	1.0/4.0	20/7	160/56	60/30	240/120	28	38	2.0	800	400
9F 10-54T	1.5/6.0	30/10	240/80	90/46	360/184	28	38	2.4	800	490
9F 12-48T	2.0/8.0	40/14	320/112	120/60	480/240	32	42	3.5	750	600
9F 13-54T	2.5/10	50/17	400/136	150/76	600/304	32	42	4.0	700	800
9F 14-65T	3.3/13.2	66/22	528/176	198/99	792/396	32	42	5.0	1200	1150
9F 16-65T	4.3/17.2	86/29	688/232	258/130	1032/520	34	44	7.0	1200	1440



Operating Specifications:

- Pressure; 25 PSI to 125PSI
- Temperature; 100°F Maximum
- Electrical; 24v, 110v, 220v-50Hz, 60Hz
- 5 Cycle regeneration (Backwash, brine draw, slow rinse, fast rinse, and service).

Warranty:

- 10 years against defect in residential tanks.
- 5 years against defect in commercial tanks.
- 5 years against defect in control valve.
- 1 year against defective material, workmanship on remaining supporting parts.



Protection:

The build-up of hard water scale significantly reduces efficiency and can damage critical components. The Trusco water softener is designed to maximize removal of harmful calcium and magnesium ions that precipitate from hard water. Properly selected and installed, a Trusco water softener will maintain your investment for the duration and ensure high efficiencies while minimizing costly repairs.

Applications:

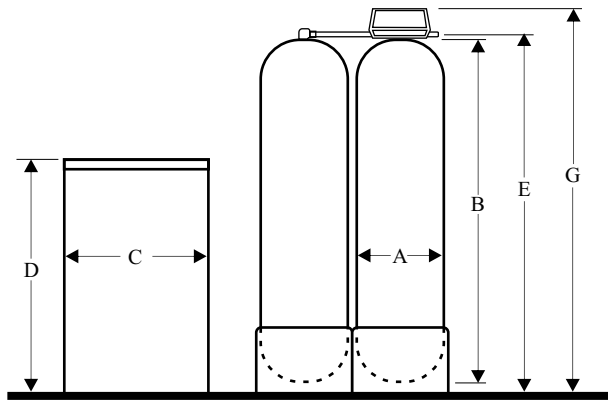
- Apartment buildings
- Commercial buildings
- Condominiums
- Factories
- Hospitals
- Laundries
- Motels/Hotels
- Nursing/Rest Homes
- Office buildings
- Restaurants
- Schools
- Car Washes
- Boiler pre-treat
- And more!

Features:

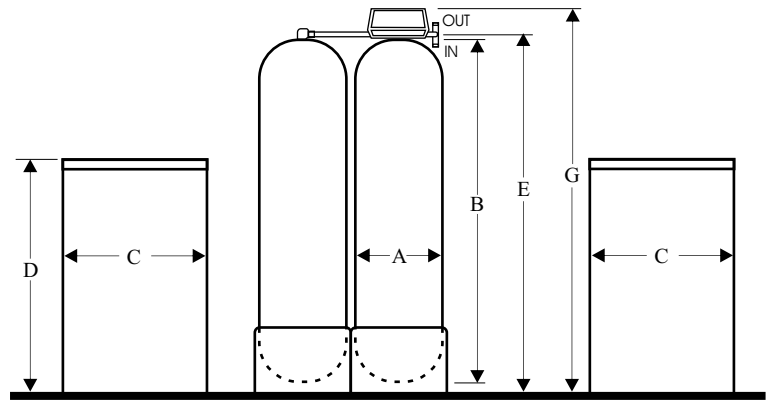
- Continuous soft water with alternating twin tank design.
- Regeneration based on water use to minimize salt usage and cost associated with operation.
- Soft water regeneration for added performance.
- Non-corroding polyglass resin tank and high density polyethylene brine tank.
- Dual guard brine operators for prevention of brine tank overflow and accurate brine selection.
- Adjustable regeneration cycles for efficient water usage.
- High capacity, long life cation exchange resin.
- Pre-plumbed manifolds reduce field installation expense.

9F SERIES WATER SOFTENER DIMENSIONS

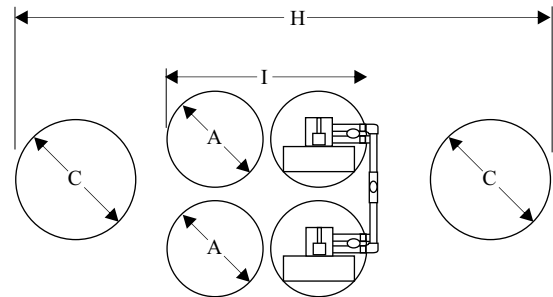
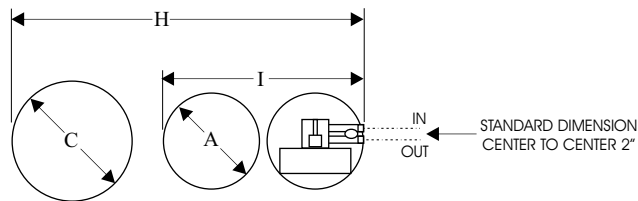
	A	B	C	D	E	F	G	H	I	
Model Number	Resin Tank Diameter	Resin Tank Height	Brine Tank Diameter	Brine Tank Height	Inlet Outlet Height	Inlet Outlet NPT	Overall Height	Overall Length	Width of Resin Tanks Combined	
TWIN	9F 8-44	8"	44"	18"	33"	46"	1"	51"	36"	25"
	9F 9-48	9"	48"	18"	40"	49.8"	1"	55"	38"	25"
	9F 10-44	10"	44"	18"	40"	46"	1"	51"	40"	25"
	9F 10-54	10"	54"	18"	40"	55.8"	1"	61"	40"	25"
	9F 12-48	12"	48"	18"	40"	49.8"	1"	56"	44"	25"
	9F 13-54	13"	54"	18"	40"	55.8"	1"	62"	46"	27"
	9F 14-65	14"	65"	24"	41"	67.2"	1"	72"	48"	29"
	9F 16-65	16"	65"	24"	41"	67.4"	1"	72"	52"	33"
DUAL TWIN	9F 8-44T	8"	44"	18"	33"	41/52"	1.5"	51"	55"	25"
	9F 9-48T	9"	48"	18"	40"	45/56"	1.5"	55"	57"	25"
	9F 10-54T	10"	54"	18"	40"	51/62"	1.5"	61"	59"	25"
	9F 12-48T	12"	48"	18"	40"	45/56"	1.5"	56"	63"	25"
	9F 13-54T	13"	54"	18"	40"	51/62"	1.5"	62"	65"	27"
	9F 14-65T	14"	65"	24"	41"	62/73"	1.5"	72"	67"	29"
	9F 16-65T	16"	65"	24"	41"	63/74"	1.5"	72"	71"	33"



Twin



Dual Twin



Distributed By:



3611 3 Mile Road NW
Grand Rapids, MI 49534-1231
1-800-446-7267